

Newsletter July 2024



The Mid-Summer Newsletter

Hello Families and Friends!

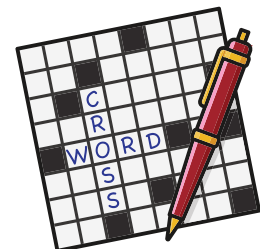
It was an absolute pleasure to host our Summer Party here at Meadowcare and it is uplifting to know that we are successful in our goal of extending that *'true family feel'* of what Meadowcare is all about.



We were so happy to meet new family members and also to keep in touch with our supportive families, who, year on year, come along to all our celebrations. Thank you also for those who attended the family meeting! It's lovely to hear your *Meadowcare* experience.



Our volunteers, *Geraldine*, *Derek* and now we have *Gary* who visits *Elizabeth*, bring such great positive vibes. *Gary* has extended his care and friendship to everyone. He even runs his own crossword group and leads it with dignity and inclusion for each individual.

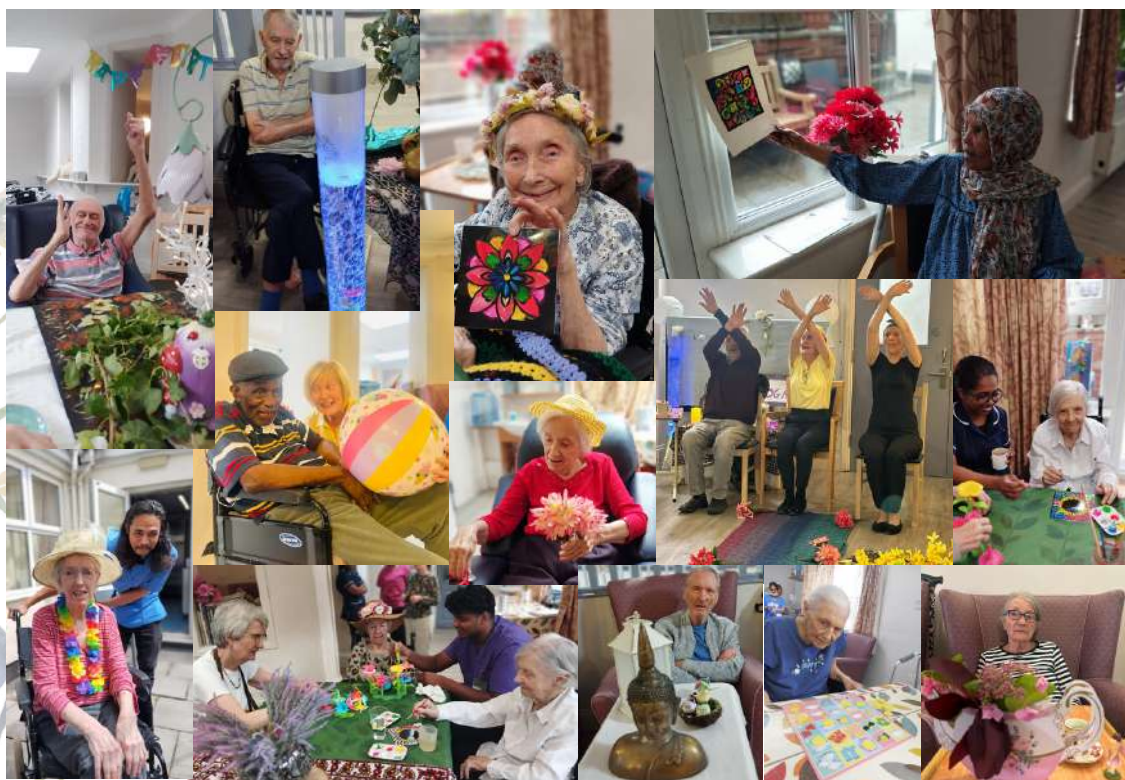


***Geraldine's* presence is a constant. She will aid families and listen to residents and will always offer support.**

***Derek,* well, the fella's love him. *Graham* and he will have regular chats and handshakes as they often walk together.**



Every month, we offer a variety of social involvement, we do regular exercise, yoga, arts, baking, lemonade making, flower power, seaside specials.



We also have started a Meadowcare Sparkle ‘On this Day in History’ session during our morning coffees. It’s all great fun.



We are using the patio and garden as much as we can, to have a change of scene. We all need to feel the sun and we all need to hear the birds.



A bonus this month was we had a young man here on a work experience. His first hour was taking it all in and by the end of the week he was happily wearing a *Pokemon* outfit and everyone adoring him for his patience and kindness.

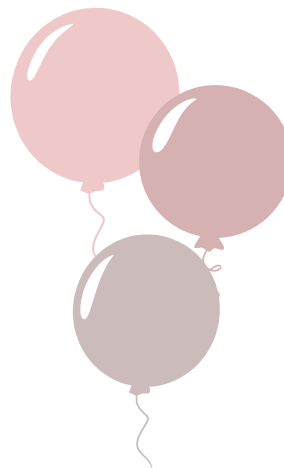
You are welcome back back anytime, *Kian*.



You may spot a portrait drawing in our photograph collection shown. This is *Joan*, sketched by *Chrissie*, her daughter whilst they both spent time in the garden. It is beautiful how *Chrissie* caught *Joan's* essence. A gem!



Birthday celebrations shoutout to Maryam, David, & Anne-Marie!!!



- Survey and Feedback -

We welcome reviews from residents/service users and their family/friends. Your review will help us to improve our services and also help others to make an informed decision about the care provider they choose.

Please use this link to submit a review:
www.carehome.co.uk/review-submit/66449

Should you wish to request for a review card, please let us know and we can send one via post.



- Manager's Note -

Hi everyone! As most of you know that I am approaching my maternity leave which will start in September. I would like to take this opportunity to thank everyone for your ongoing support. For the meantime, I have my supportive colleagues who will be looking after Meadowcare whilst I am away. Grindle has stepped up to becoming our new Deputy Manager and Clinical Lead. We also have our new Senior Manager, Lyndsey who will be covering for me in my absence. I'll see you all soon! - *Francis C. (Registered Home Manager)*

Useful Contacts:

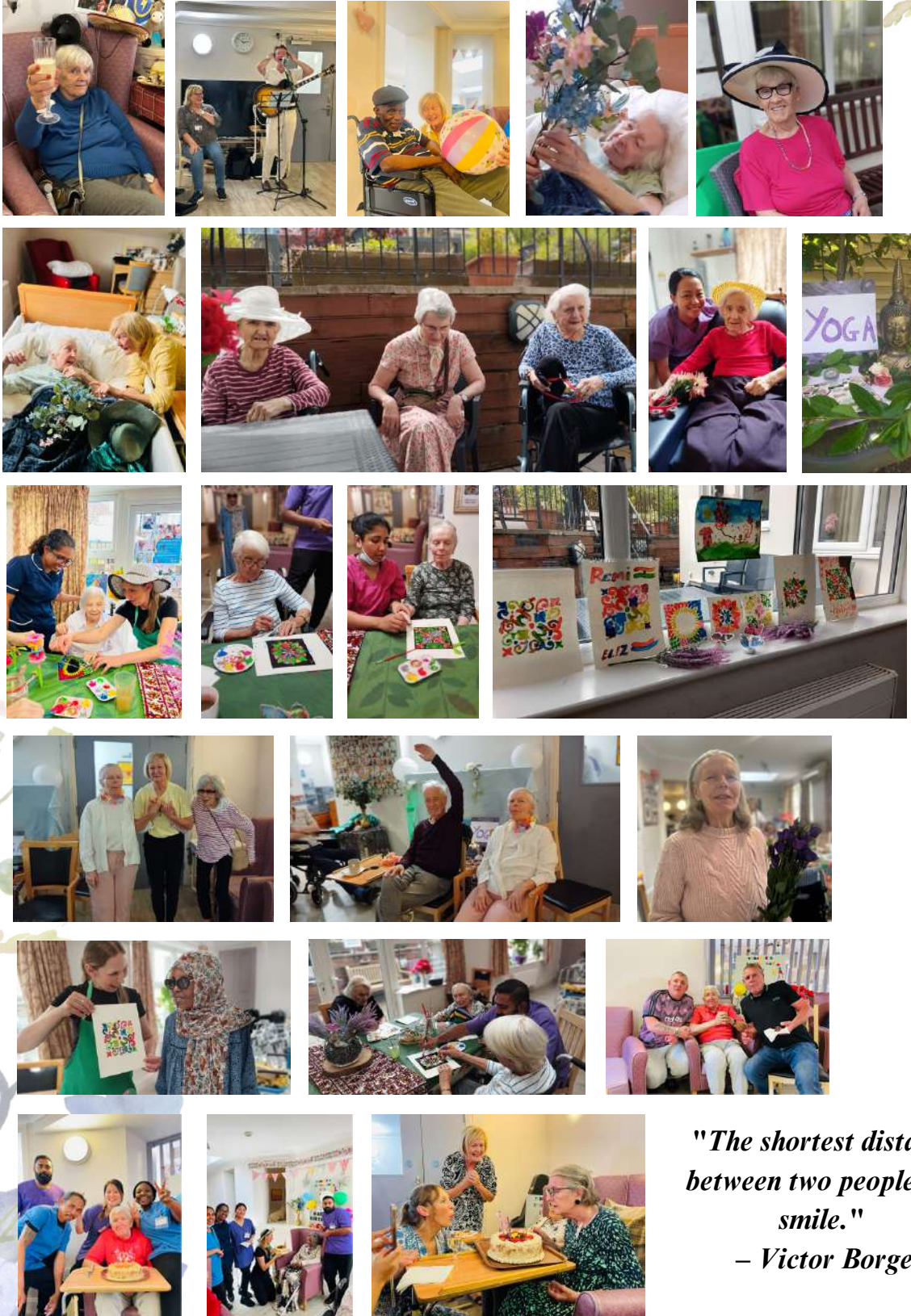
Lyndsey Dixon (Senior Manager) - lyndsey@meadowcare.co.uk

Grindle Villanueva (Deputy Manager) - grindle.villanueva@nhs.net

Sabu Sidharthan (BusinessSupport/Admin)- sabu.sidharthan@meadowcare.co.uk

- Photoboard -





*"The shortest distance
between two people is a
smile."
– Victor Borge*