



# Christmas & New Year

Good tidings to all!

This month has flown by in a flurry of shopping for presents for each and every one.





We had a visit from Wiltshire farm who brought us tasty treats to try. It is always a good thing to keep our doors open. It keeps us involved with outside communities and keeps us connected.



Our Christmas Party with Geoff + Pete was good fun and, yes, more food, well it is that season!





We want to extend a big thank you to Clifton Tots Preschool who also visited. This was super! The children mingled and sang and brought great positive energy with them. They're back again soon, Yes Please.



You will see from the photos, we had Christmas jumper day and Santa Claus delivering the presents. Santa's beard seemed well glued on at the beginning of the day and as the day progressed and the temperature rose, Santa's beard had a bit of a mishap of falling down as well as the red trousers!

All in the fun!

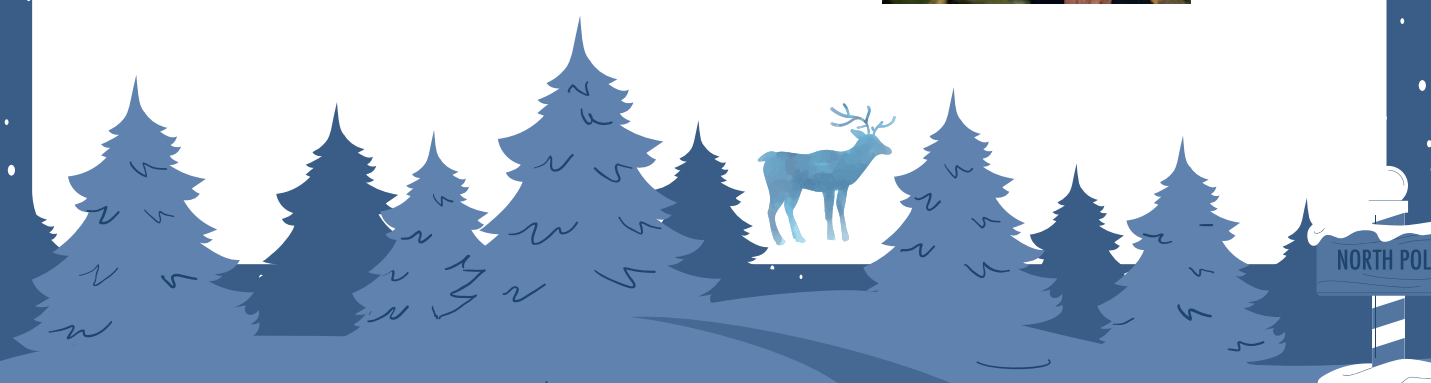




# Christmas Photoshoot

Huge shoutout to Team Lead Myla and the whole team for making the yearly Meadowcare Residents Christmas photoshoot possible.









This year draws to a close and we welcome 2025. We have lots planned and Shannon, our Voice singer, is here early January - Yes another Meadowcare party!!!

### Birthday Celebrations



Margaret



Pat



*“Kindness can transform someone’s dark moment with a blaze of light. You’ll never know how much your caring matters.”*

*- Amy Leigh Mercree*





### Christmas Photos





